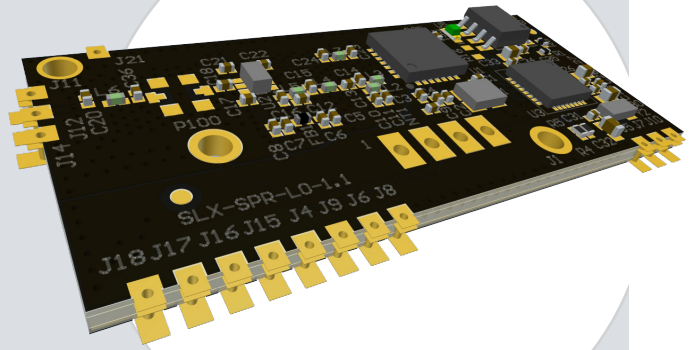


TECHNICAL OVERVIEW

Seluxit Sparrow

Utility meter modem securely supporting multiple communication protocols. With one footprint, Sparrow's modular, standardized approach saves you time and money.



Why Sparrow?

1. Utility companies need remote and automatic meter reading
2. Customer requirements change, depending on the project
3. Customized solutions are slow, expensive and require special knowledge
4. Sparrow offers standard hardware/software solutions as modules with one footprint
5. Meter manufacturers don't need to change the software, Sparrow converts your data automatically
6. Meter manufacturers only need to adapt once to the Sparrow footprint
7. Sparrow security-by-design enables compliance with security and privacy requirements

Key Features

- Pre-certified (ETSI, FCC)
- Pre-configured for automatic and secure cloud connection*
- Security-by-design
- Supports different radios and protocols, but always the same footprint
- Multiple communication-protocol & regional support
- Evaluation board with debugging interface
- Over-the-air firmware update

Benefits

- Fast delivery, competitive price
 - ▶ *Pre-certified, off-the-shelf product*
- Future-proof design
 - ▶ *Multiple communication-protocol support through updateable software*
 - ▶ *Support for easy in-field hardware changes through modular design*

* Protocol choice may require gateways or repeaters for cloud data transfer. Seluxit offers an 868 MHz gateway which can receive Wireless M-Bus and LoRaWAN® and send onwards to customer's Internet connection via Ethernet and WiFi.

Key Specifications

Dimensions	45 x 20 x 4,40 mm ± 0.5 mm
Power supply	3.3 V
Temperature	-40 to +85°C (industrial grade)
Pinheaders	<ul style="list-style-type: none">• 1x serial interface
PCB edge connectors	<ul style="list-style-type: none">• 1x serial interface• 1x single-wire interface• 1 antenna interface
Antenna connectors	U.FL or PCB edge connectors
Evaluation board	Open-source hardware with built-in antenna (50 ohm)
Supported data formats	SML, DLMS / COSEM, IEC 61850
Radio options	(1) 868 / 915 / 920 MHz (Europe, US, Japan) (2) 2.4 GHz (3) NB-IoT (4) LTE-M (5) Other radios supported in future versions
Protocol options	(1) LoRaWAN®, Wireless M-Bus (2) WiFi & Bluetooth (3) NB-IoT (4) LTE-M (5) Other protocols supported in future versions

The LoRa® mark is a registered trademark of Semtech Corporation.

Visit seluxit.com/sparrow

